



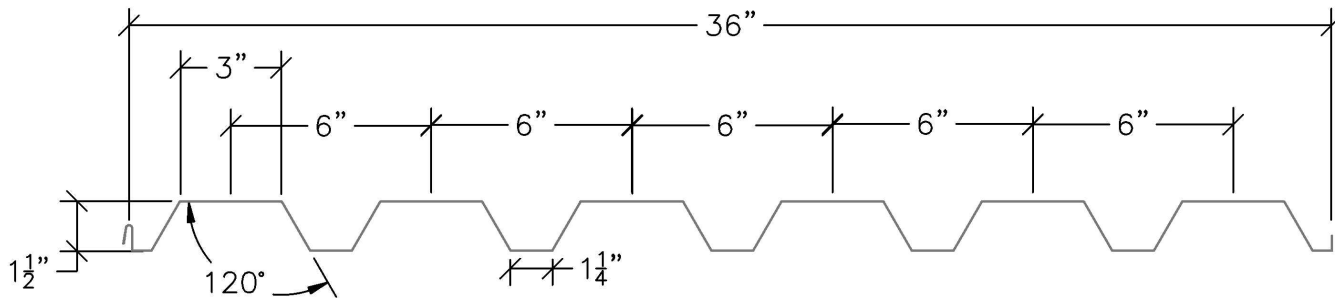
NU-STEEL
IND. (2008) LTD.

NS 636 STEEL DECK

20 Gauge & 22 Gauge



Heavy duty steel deck comes in a satin coat or galvanized finish. It is used for built up roofs or mezzanine floors. The galvanized option can be used for a tough liner panel.



TECHNICAL SPECIFICATIONS

Maximum Uniformly Distributed Specified Load (psf)

Spacing		1 - Span		2 - Span		3 - Span	
		20 Ga.	22 Ga.	20 Ga.	22 Ga.	20 Ga.	22 Ga.
3'-0"	Ws	467	356	428*	347*	486*	395*
	L/240	387	298	**	**	**	**
3'-6"	Ws	343	261	367*	294	417*	338*
	L/240	244	188	**	**	**	**
4'-0"	Ws	263	200	275	225	344	281
	L/240	164	126	**	**	309	238
4'-6"	Ws	207	158	217	178	272	222
	L/240	115	88	**	**	217	167
5'-0"	Ws	168	128	176	144	220	180
	L/240	84	64	**	**	158	122
5'-6"	Ws	139	106	145	119	182	149
	L/240	63	48	**	115	119	91
6'-0"	Ws	117	89	122	100	153	125
	L/240	48	37	116	89	82	70

Section Properties of Wall Cladding

Gauge	Thickness (in)	Fy (Ksi)	Section Modulus		Moment of Inertia		Factored Resistance				
			Midspan (in ³)	Support (in ³)	Midspan (in ⁴)	Support (in ⁴)	Moment (ft-kip)		Web Crippling (lbs)		
								Midspan	Support	End	Interior
22	0.0299	50	0.16	0.18	0.123	0.163	0.6	0.68	1321	1953	
20	0.0359	50	0.21	0.22	0.16	0.2	0.79	0.83	1690	2408	

Notes:

- Properties and loads were developed in accordance with CSA Specification S136-01 - North American Specification for the Design of Cold-Formed Steel Structural Members Latest Edition
- Properties and loads are based on Grade 50 steel with a minimum yield stress of 50 ksi.
- All properties are based on one linear foot of panel width.
- Load tables were developed in accordance with Limit State Design.
- Figures in row "Ws" should be checked against (Specified Live Load + 0.833xSpecified Dead Load).
- Deck is not designed to carry concentrated load.
- All spans are assumed equal.
- An * indicates a reduction in capacity to account for web crippling.
- Factored web crippling load were determined using a bearing width of 1.25" minimum.
- Figures in row "L/240" are load values based on 1/240th of span. The "***" indicates that strength load governs.



NU-STEEL
IND. (2008) LTD.

Box 1416
Winkler MB, Canada
R6W 4B4
nusteel@mts.net

p 204.325.4368
f 204.325.5500